

FMLDT31-O

Forbes Marshall Liquid Drain Trap

Description

The Forbes Marshall Liquid Drain Trap, FMLDT31-O is a compressed air trap of cast iron body and cover for compressed air and other pressurised gases. The trap body is equalised with the pressure in the system through the balancing connection on top of the trap body.

Size and End Connections

DN 15 Screwed BSPT / NPT

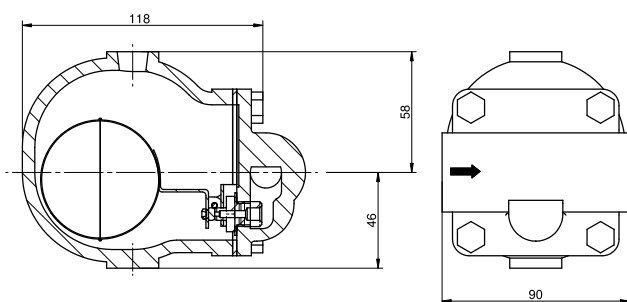
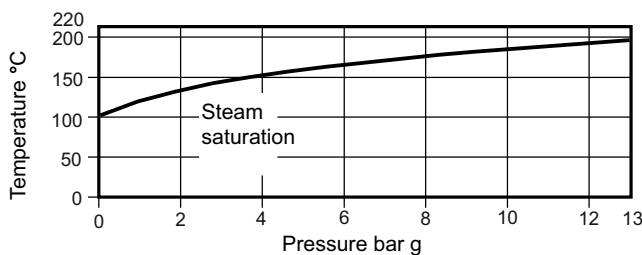
Limiting Conditions

PMO -Max. operating pressure	13 bar g
TMO-Max. operating temperature	220 °C
Cold hydraulic test pressure	19.5 bar g
PMX-Max. differential pressure	13 bar g
Minimum Operating temperature	0 °C

Note : When used on liquids having a specific gravity of less than 1, the maximum operating pressures will be

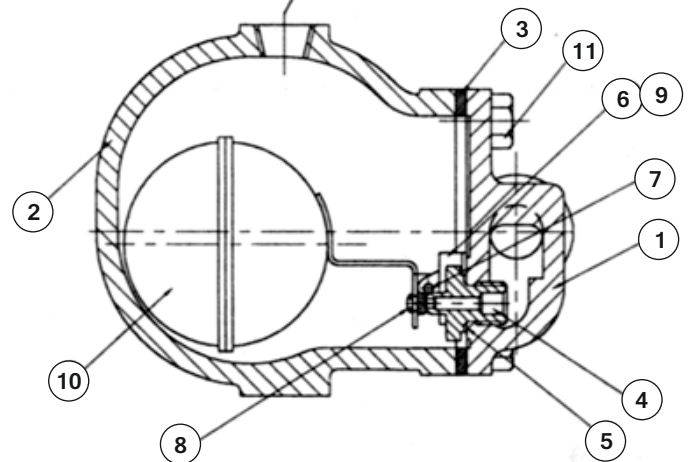
Sp.G	Kg/cm ²	Bar g
0.9	13	13
0.8	11.92	11.7
0.7	8.76	8.6
0.6	5.09	5.0

Operating Range



All dimensions are in mm
Total assembly weight : 2.5kg

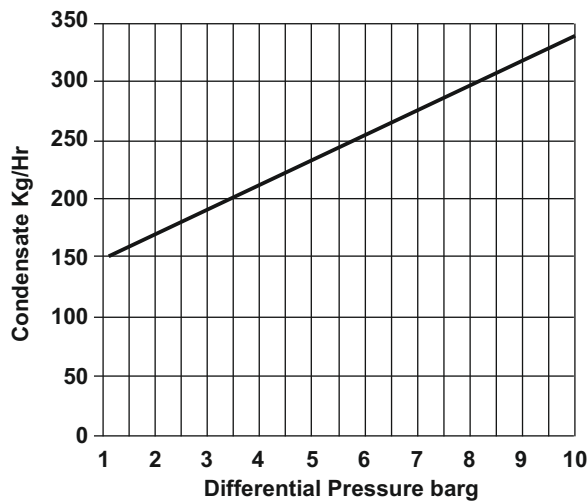
Pressure equalising connection 1/2" BSPT



Material

No	Part	Material	Standard
1	Base	Cast Iron	IS 210 FG 260
2	Cover	Cast Iron	IS 210 FG 260
3	Cover Gasket	SS Exfoliated Graphite	
4	Valve Seat	CA40	ASTM A743
5	Valve Seat Gasket	SS Type 410	ASTM A240
6	Pivot Frame	SS Type 304	ASTM A240
7	Pivot Pin	SS Type 304	ASTM A276
8	Button	Synthetic Rubber Viton	
9	Ch. Hd Screw M4x6Lg	SS Type 304	IS 1364
10	Float Assembly	SS Type 304	ASTM A240
11	Hex. Hd bolt	Carbon Steel	ASTM A 193 Gr B7

Capacity



How to order

Example: 1 No. Forbes Marshall Liquid Drain Trap, FMLDT31-O, DN 15 BSPT

Installation

The arrow on the casting indicates the flow direction.

Servicing

With suitable isolation repairs can be carried out with the air trap in the line.

Undo cover bolts and lift off cover. When reassembling, make sure that all joint faces are clean. Always use a new gasket and apply a thin coating of jointing paste. Tighten cover bolts uniformly. Open up isolating valve.

How to Fit Main Valve Assembly

Isolate the trap, undo cover bolts, and remove existing mechanism. Using a little jointing paste on the seat (A) thread and gasket (B), fit the new valve seat to the body. Attach the pivot frame (C) to the body with assembly set screws (F), but do not tighten. Fit the float arm to the pivot frame using the pin (E) and by moving the complete assembly center the valve head onto the seat orifice. Hold the assembly firmly in place and tighten up set screws to the recommended tightening torque. Check operation by raising and lowering the float several times making sure that the valve head is centering properly on the seat. Make sure all joint faces are clean; apply a thin coating of jointing paste to seat threads. Tighten cover bolts uniformly to the recommended tightening torque. Open up isolating valve slowly.

Recommended Tightening Torques

Part	Torque (Nm)
Valve Seat	25 - 35
Cover Bolts	25 - 35

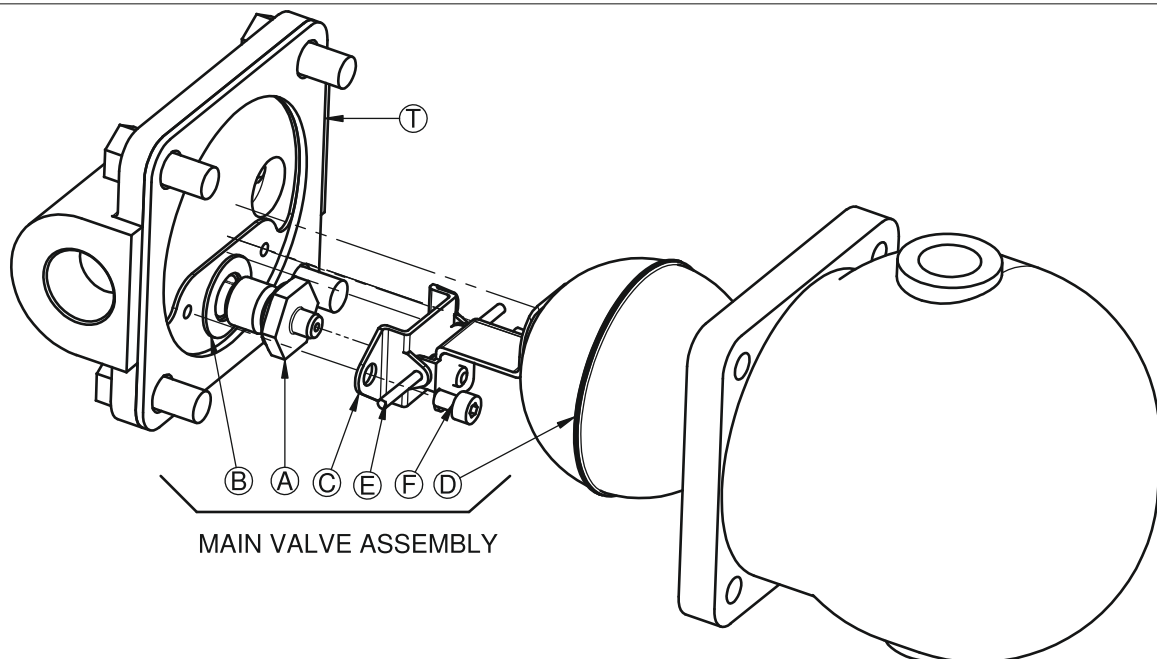
Available Spares

Main valve assembly with float	A, B, C, D, E, F
Two complete sets of gasket (Pkt of 5)	B,T

How to Order Spares

Always order spares by using the description given in the column headed "Available Spares" and stating the size and type of trap.

Example: 1 No. Main valve Assembly for DN 15 Forbes Marshall Liquid Drain Trap FMLDT31-O



www.forbesmarshall.com

Forbes Marshall Arca

Codel International

Krohne Marshall

Forbes Vyncke

Forbes Marshall Steam Systems

A: Forbes Marshall Pvt. Ltd.
Opp. 106th Milestone, CTS 2220,
Mumbai-Pune Road, Kasarwadi,
Pune MH 411034 INDIA

P: +91(0)20-68138555

F: +91(0)20-68138402

E: ccmidc@forbesmarshall.com

© All rights reserved. Any reproduction or distribution in part or as a whole without written permission of Forbes Marshall Pvt Ltd, its associate companies or its subsidiaries ("FM Group") is prohibited.

Information, designs or specifications in this document are subject to change without notice. Responsibility for suitability, selection, installation, use, operation or maintenance of the product(s) rests solely with the purchaser and/or user. The contents of this document are presented for informational purposes only. FM Group disclaims liabilities or losses that may be incurred as a consequence of the use of this information.

Forbes Marshall International Pte. Ltd.

16A, Tuas Avenue 1,
#05-21, JTC Space @Tuas
Singapore - 639533

P: +65 6219 3890

CIN No: U28996PN1985PTC037806