

EverSense for Groundwater Extraction Management



EverSense

Customer Details

Total Consumption: 440614.30 m³

MOC No.: 50050
MOC Limit Daily: 100
Service Start Date:
Service End Date:

Hourly Consumption: 958.50 m³

Today's Consumption: 488.67 m³

Pump: 100%
Flowmeter: 100%

Removal Efficiency: 100%

Removal Efficiency: 100%

Borewell Location Name	Location	Hourly Total (m ³)	Daily Total (m ³)	Flow (m ³ /hr)
0100	General area borewell	10.00	80.00	0.00
0101	Removal well	10.00	80.00	0.00
0102	Removal well	10.00	80.00	0.00
0103	Removal well	10.00	80.00	0.00
0104	Removal well	10.00	80.00	0.00
0105	Removal well	10.00	80.00	0.00
0106	Removal well	10.00	80.00	0.00
0107	Removal well	10.00	80.00	0.00
0108	Removal well	10.00	80.00	0.00
0109	Removal well	10.00	80.00	0.00
0110	Removal well	10.00	80.00	0.00

Daily Consumption: 488.67 m³

Optimising borewell usage ensures water availability for your process within the stipulated regulatory norms.

Many industries depend on groundwater for their day-to-day process operations. With erratic rainfall, maintaining healthy groundwater levels is vital. Government bodies have been implementing stricter regulations to monitor and preserve the groundwater table (such as stipulating a limit on water extraction and mandating rainwater harvesting). Several industries rely on approximately 100m³ of daily water extraction through borewells for their production needs. Generally, they tend to extract groundwater in an uneven manner resulting in excessive extraction from one of their borewells or underutilisation of another. This leads to rapid deterioration of the groundwater level and increased salinity. EverSense for Groundwater Extraction Management helps you optimise borewell usage and stay compliant with regulatory norms.

We provide actionable insights

Proactive Issue Resolution

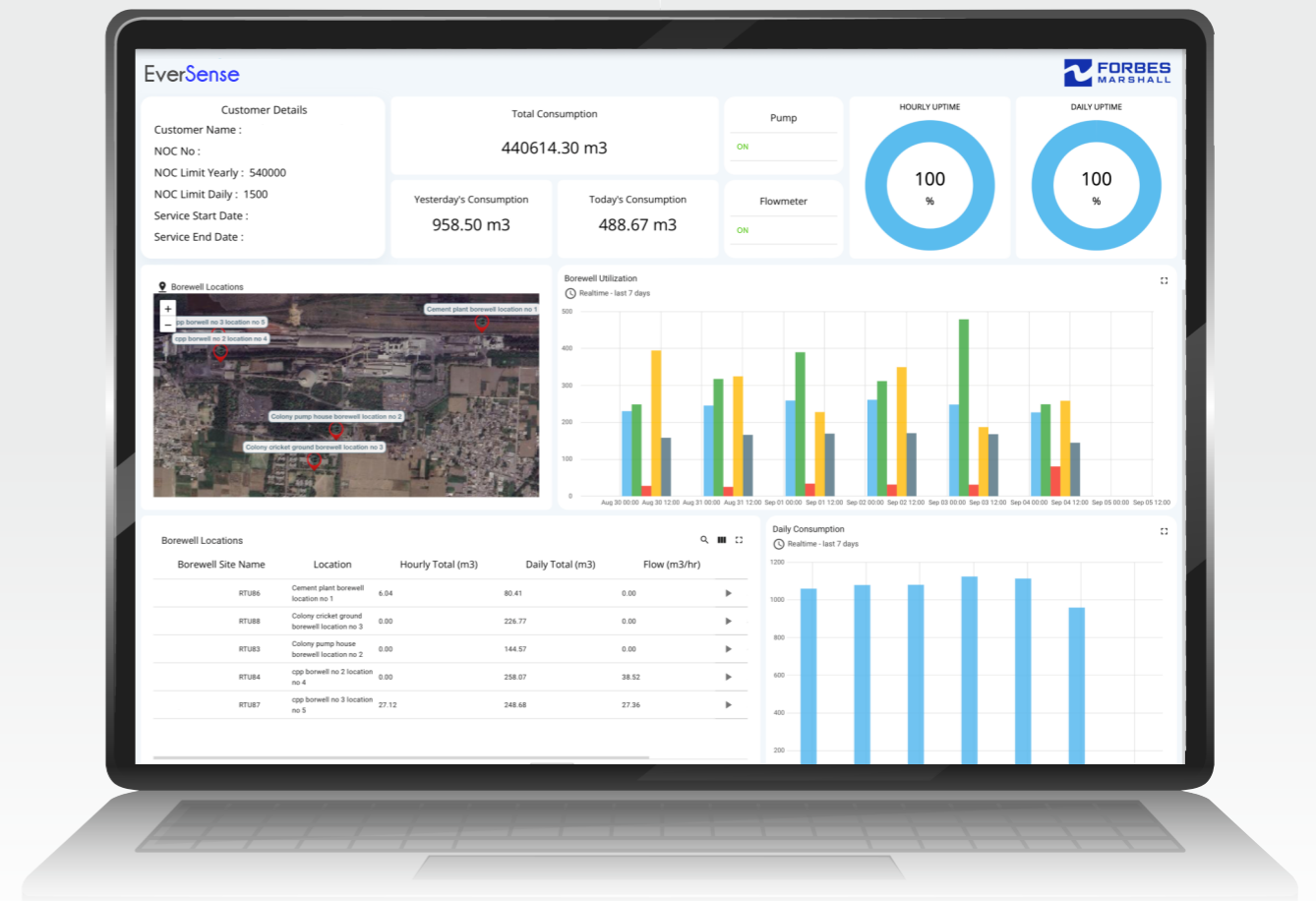
The quality of the groundwater is monitored, ensuring that uptime of the equipment is maintained at >95%. Comprehensive monthly assessments, monitoring groundwater levels and borewell maintenance requirements equip you with the knowledge of which borewell to utilise, when.

Operational Efficiency

Our benchmarks of m³/KW of electricity required for each borewell helps account for variability in pump efficiency. We help establish standard operating procedures (SOPs) and maintenance practices to ensure health and optimal performance of borewell pumps, valves, metres and pipeline accessories.

Backed by our wide reach and expertise

Our team of sales and service engineers, based in 18 countries, have experience of over 30 industry segments globally. These specialists visit plants daily, understanding and addressing real needs. And now, you have 24x7 access to this expertise through both, digital connects and site visits.



Delivering Benefits



Reliability

Maintaining >95% uptime through predictive maintenance of the meter ensures highly accurate groundwater extraction.



Efficiency

Training the maintenance team on standard operating procedures and maintenance practices. Identifying anomalies in data to take immediate corrective action, preventing reverse flow failures.



Quality

Ensuring correct salinity of water from where the water is being extracted. Enabling predictive measures for downstream process optimisation through water hardness analysis.



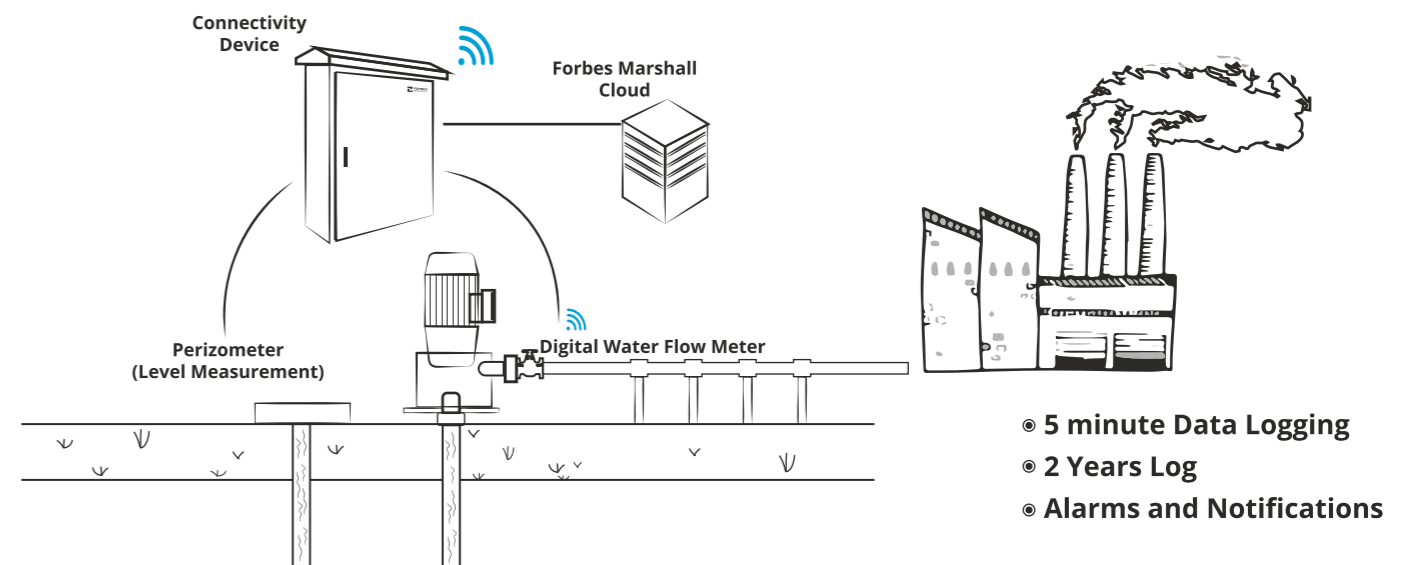
Water Accountability and Savings

Real-time data diagnostics ensures precise measurement of groundwater extracted. By analysing consumption areas and patterns, one can achieve approximately 1.5% reduction in groundwater (borewell water) consumption.

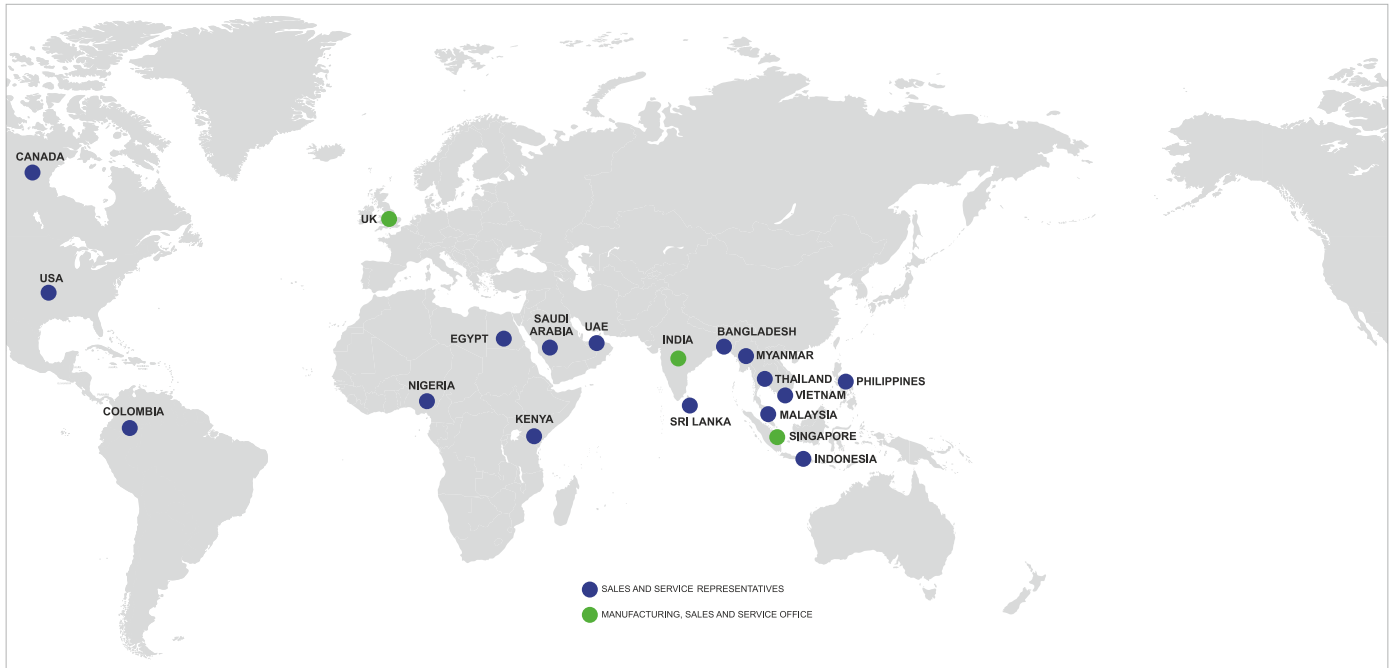


Sustainability

Reducing electricity consumption per m³/KW by identifying the correct borewell for water extraction, optimising the process. This increases water accountability, and reduces carbon emissions.



Energising Businesses and Communities Worldwide



A Multinational with Indian Roots

19	Countries
37	Offices Worldwide
18	Distribution Centres
500	Sales and Services Engineers
8,000	Customers Worldwide

World Class Technology from World Class Facilities



Enabling Results



Process Efficiency



Energy Efficiency



Optimum Productivity



Improved Asset Uptime



Environmental Responsibility



Safety and Regulatory Compliance



www.forbesmarshall.com

Forbes Marshall Arca

Codel International

Krohne Marshall

Forbes Vyncke

Forbes Marshall Steam Systems

A: Forbes Marshall Pvt. Ltd.

Opp. 106th Milestone, CTS 2220, Mumbai-Pune Road, Kasarwadi, Pune MH 411034 INDIA

P: +91(0)20-68138555

F: +91(0)20-68138402

E: beyondconnectivity@forbesmarshall.com

CIN No: U28996PN1985PTC037806

© All rights reserved. Any reproduction or distribution in part or as a whole without written permission of Forbes Marshall Pvt Ltd, its associate companies or its subsidiaries ("FM Group") is prohibited. Information, designs or specifications in this document are subject to change without notice. Responsibility for suitability, selection, installation, use, operation or maintenance of the product(s) rests solely with the purchaser and/or user. The contents of this document are presented for informational purposes only. FM Group disclaims liabilities or losses that may be incurred as a consequence of the use of this information.



Scan the QR code to enquire